

An aerial photograph of a Swiss town, likely Lucerne, featuring a large, ornate church with two prominent towers and a central courtyard. The town is built on a hillside, and the scene is captured during a golden hour, with warm light and soft shadows. The church has two tall, slender towers with domes and crosses on top. The courtyard is a large, open green space with a paved walkway.

WORLD HERITAGE
EXPERIENCE  SWITZERLAND

UNESCO World Heritage in Switzerland

Sales Guide 2024

WORLD HERITAGE
EXPERIENCE  SWITZERLAND
[whes.ch / ourheritage.ch](https://whes.ch/ourheritage.ch)

Imprint

Edition
Publisher

Sales Guide February 2024
World Heritage Experience Switzerland

World Heritage Experience Switzerland - WHES

One of the tasks of World Heritage Experience Switzerland (WHES) is to raise public awareness of the attractiveness and significance of UNESCO World Heritage properties in Switzerland. In addition to its commitment to valorisation, WHES also supports World Heritage properties in the areas of management and cultural mediation in schools. To find out more, visit www.ourheritage.ch to stay up to date and follow us on our social media channels: when you visit one of 13 sites, tag us with

@worldheritageswitzerland #worldheritageswitzerland #ourheritage



Contact

World Heritage Experience Switzerland - WHES
Spitalgasse 4, CH-3011 Bern
www.whes.ch, www.ourheritage.ch, info@whes.ch

Welcome

WORLD HERITAGE
EXPERIENCE  SWITZERLAND

Dear Travel Professionals,



Thank you for taking an interest in the World Heritage properties in Switzerland. Indeed, these natural and cultural assets have plenty to offer: enchanting cities, unique landscapes, historic legacies and hidden treasures. Much of this heritage was left to us by our ancestors, but nature has also played its part in making the World Heritage properties an endless source of amazement. There are four natural and nine cultural assets in total – and as unique as each site is, they all have one thing in common: the universal value that they share with the global community.

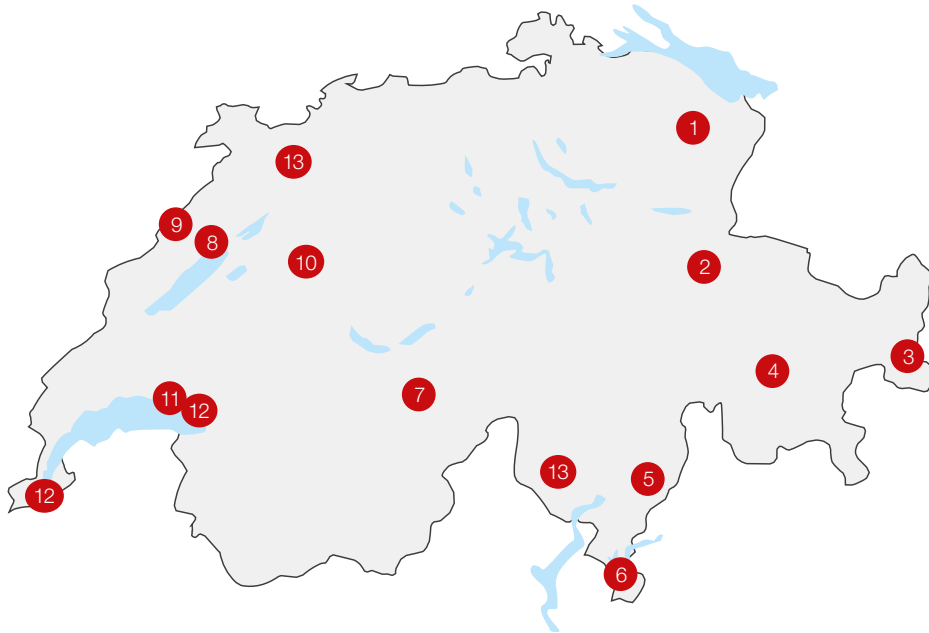
The enclosed documentation offers you an broad insight into the diversity and uniqueness of the UNESCO World Heritage in Switzerland.

We look forward to collaborating with you.

Kaspar Schürch
Director WHES

Overview map

The UNESCO World Heritage in Switzerland



- 1 Abbey of St. Gall
- 2 Swiss Tectonic Arena Sardona
- 3 Benedictine Convent St. John in Müstair
- 4 Rhaetian Railway in the Albula / Bernina Landscapes
- 5 Three Castles, Defensive Wall and Ramparts of the Market-Town of Bellinzona
- 6 Monte San Giorgio
- 7 Swiss Alps Jungfrau-Aletsch
- 8 Prehistoric Pile Dwellings around the Alps
- 9 La Chaux-de-Fonds / Le Locle, Watchmaking Town Planning
- 10 Old City of Berne
- 11 Lavaux, Vineyard Terraces
- 12 The Architectural Work of Le Corbusier
- 13 Ancient and Primeval Beech Forests of the Carpathians and Other Regions of Europe

Welcome to Switzerland

Four outstanding natural phenomena and nine great cultural achievements bear the most sought-after emblem of UNESCO.

Table of contents

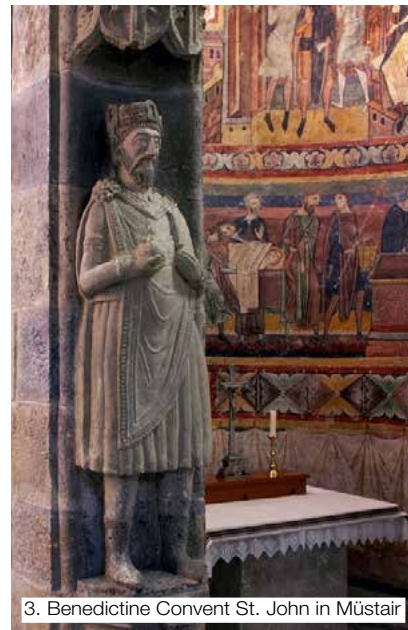
13 reasons.....	6
One-day programmes.....	10
Voucher Booklet.....	11
World Heritage properties.....	12
Families.....	30
Barrier free travel.....	32
Events.....	34
Holiday packages.....	38
How to get around.....	40
The European network.....	44
Contacts.....	45

13 reasons

to visit the UNESCO World Heritage



1. A library with 170,000 books and medieval manuscripts.
2. Mountains that stand on their heads
3. The largest fresco cycle from the early Middle Ages in Europe.



4. A railway integrated into the mountain landscape
5. A defensive complex controlling transit through the Alps.
6. *Ticinosuchus ferox* at the entrance of the Museum of fossils.





7. Swiss Alps Jungfrau-Aletsch

7. The largest connected glaciated area in the Alps.

8. Fascinating insights into prehistoric life.

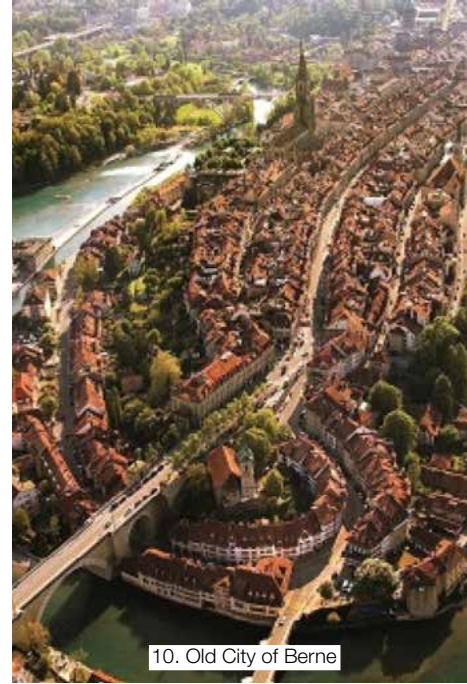
9. An urban design dedicated to one single industry.



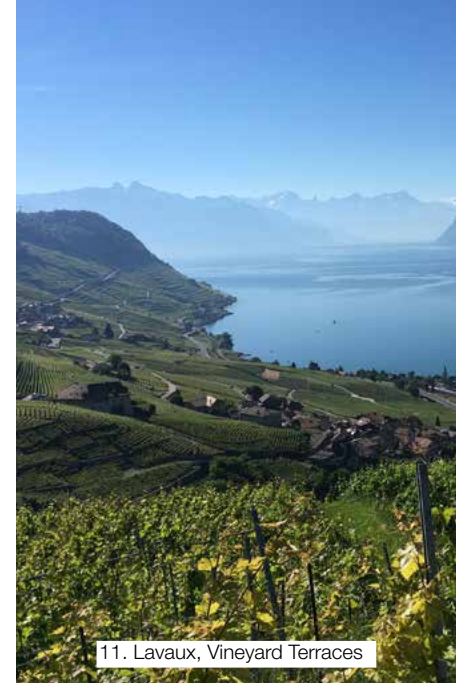
8. Prehistoric Pile Dwellings around the Alps



9 La Chaux-de-Fonds / Le Locle, Watchmaking Town Planning



10. Old City of Berne



11. Lavaux, Vineyard Terraces



12. The Architectural Work of Le Corbusier

10. An ambitious urban development of the Middle age.

11. A century old winegrowing culture.

12. An outstanding contribution to the Modern Movement.

13. Ancient forests conquering a continent



13. Ancient and Primeval Beech Forests of the Carpathians and Other Regions of Europe

One-day programmes

Adventures in the World Heritage

Immerse yourself in a journey through Switzerland's history and nature: monuments, cultural and natural landscapes bear witness to our country's history. Day programmes for every family, group of friends and season show what there is to experience in the World Heritage regions.

Programmes to discover following World Heritage properties:

- Benedictine Convent of St. John in Müstair
- La Chaux-de-Fonds / Le Locle
- Prehistoric Pile Dwellings around the Alps
- Rhaetian Railway Albula/Bernina
- Swiss Alps Jungfrau-Aletsch
- Monte San Giorgio

Did you know?

Most Swiss people do not know about the World Heritage properties that are on their doorstep. Discover new excursion destinations and day programmes that highlight our cultural and natural treasures.

More information

All programmes are listed on our website www.ourheritage.ch under the filter Experience - **Destination**, on our **Trade Corner** or on the **QR-Code**.



Voucher booklet

The handy travel companion

Discover the World Heritage through selected experiences and benefit from discounts and added values exclusively for Tour operators and retailers. The voucher booklet (format A6), with a value of more than CHF 45 (€ 40), is the best travel companion to access 9 different World Heritage properties.

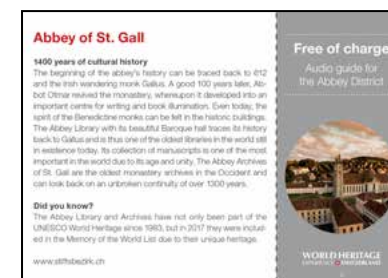
If you are interested in offering those added values and attractive discounts to your customers - free of charge - please contact WHES. The booklet is currently available in English, German, French, Italian. If you request the booklet in a different language please contact us directly.

Print@Home Voucher

Available for the Tour Operators going paperless we offer a Print@Home version of our Voucher booklet. Travellers can easily print it at home and use the voucher for 1 of the 9 experiences listed.

Voucher booklet

Example



Print@Home Voucher

Example





Abbey of St. Gall

1400 years of cultural history

The foundation stone for the abbey was laid in 612 by the Irish itinerant monk Gallus. A good 100 years later, Abbot Otmar revived the monastery and transformed it into an important centre for writing activities and book illumination. The spirit of the Benedictine monks can still be felt in the historically impressive walls today. Over the entrance of the Abbey Library of St. Gall there is an ancient Greek inscription meaning “pharmacy of the soul”. The library is the oldest and one of the most attractive rococo rooms in Switzerland. Besides the 170,000 books, it also accommodates one of the most important autochthonous collections of medieval manuscripts in Europe. The Abbey Plan of St. Gall, the “Evangelium Longum” and the oldest conserved German language book, the “Abrogans”, are particularly worthy of note.

Did you know?

- 333 explanations of typical abbey buildings are to be found on the famous Plan of St. Gall, which dates back to 825.
- The Alcuin Bible, produced around the year 800 has 840 pages and weighs about 20 kg.
- The Abbey of St. Gall can look back over a unique and continuously documented history of more than a thousand years.

A proposal of World Heritage experiences

Target	Activity	Price in CHF*
FIT	Entrance to the Abbey District: Abbey Library, Vaulted Cellar and Exhibition Space	18.-
FIT	Public tour: there is at least one public guided tour of the Abbey Library every day	included with a valid entrance
FIT	Audioguide: German – English – French – Italian	5.-
FIT / Groups (max 20 pax)	Guided Tour of the old town of St. Gall including the Abbey District	FIT 25.- Groups from 220
Groups (max 20 pax)	Guided tour of the Abbey District	from 220.-
Groups (from 10 pax)	Entrance to the Abbey District: Abbey Library, Vaulted Cellar and Exhibition Space	16.- per person
Groups	Themed guided tours of the Abbey District	from 220.-

* Group and special rates for tour operators on request. Prices may be subject to change. Other offers on page 30, 32, 38.



Swiss Tectonic Arena Sardona

How mountains form

The collision between Africa and Europe caused the formation of the Alps millions of years ago. Layers of rock were pushed on top of one another, folded and broken. Along the so-called “Glarus main thrust fault”, a line that can now be seen from afar, layers of rock that were 250-300 million years old were pushed together with much younger rocks that were 35-50 million years old. There is nowhere else where the traces of these tremendous forces are so visible as in the mountain landscape around Piz Sardona in the border region of the cantons of St. Gall, Glarus and Grisons. The area has great value for schools and research. It is of great interest to hikers and nature lovers too.

Did you know?

- In the Tectonic Arena Sardona the mountains stand on their heads: older strata of rock have shifted to lie above younger layers.
- Over the past 200 years or more, seminal findings into the way mountains were formed have been made at the Sardona UNESCO World Heritage Site.

A proposal of World Heritage experiences

Target	Activity	Price in CHF*
FIT / Groups	Guided nature tours in Flims	25.-
FIT / Groups	Expedition Tschinglen-Alp (incl. cable car Tschinglenalp)	18.-
FIT / Groups	Hiking tour on Sardona World Heritage trail	575.-
FIT / Groups	Tour with a GeoGuide Sardona	on request
FIT / Groups	Visitor centres in Glarus and Elm	free of charge

* Group and special rates for tour operators on request. Prices may be subject to change. Other offers on page 38.



Benedictine Convent St. John in Müstair

The nuns open their doors

According to legend, the monastery complex in Val Müstair in the canton of Grisons, was founded in the 8th century by Charlemagne and was never fully destroyed. Well preserved, it still reveals building styles from several eras, and holds art treasures from more than twelve centuries. The wall paintings in the convent church were decisive for its acceptance on the UNESCO World Heritage List. This is one of the largest and best-preserved fresco cycles from the early Middle Ages. The nuns are still active in the convent today in the spirit of “ora et labora”, pray and work. Convent life, cultivation, the museum, research and restoration all merge to form a unique whole.

Did you know?

- St. John’s monastery in Müstair is a centre of Benedictine life since 1246 years.
- If you counted the number of psalms recited in the monastery until now, you would come to the amazing total of 9 804 375.

A proposal of World Heritage experiences

Target	Activity	Price in CHF*
FIT	Entrance to the Convent Museum Müstair	12.-
FIT (min. 6 pax)	Guided tour of the museum	included in the entrance fee
FIT (min. 6 pax)	Guided tour of the church	included in the entrance fee
FIT (min. 8 pax)	Combined guided tour of the museum and the church	included in the entrance fee
FIT	Stay at the Benedictine guesthouse	on request

* Group and special rates for tour operators on request. Prices may be subject to change. Other offers on page 32, 38.



Rhaetian Railway in the Albula / Bernina Landscapes

A triumph of railway engineering

The line of the Rhaetian Railway between Thusis and Tirano (Italy) is a true masterpiece. It is a unique example of a railway which has been harmoniously integrated into the high-mountain landscape. Narrow radii, sophisticated engineering structures and impressive tunnels: the many gorges, mountain barriers and gradients were overcome using a range of innovative ideas, and the 122 km-long route has been slotted pleasantly into the wild natural environment. The journey is a voyage of discovery for connoisseurs. Railway enthusiasts can admire the pioneering creations at close quarters, and those with a thirst for knowledge might like to visit the Albula railway museum in Bergün.

Did you know?

- The Rhaetian Railway winds its way through the Bernina Pass up a 7% gradient without the help of a rack-wheel, climbing from 429 m to 2,253 m above sea level.
- The 62 km long Albula Line was built in just six years (1898 –1904).

A proposal of World Heritage experiences

Target	Activity	Price in CHF* Adult/Child
FIT	World Heritage Culinary Express with a performing actor (German)	169.- / 143.-
FIT	UNESCO World Heritage Pass	from 59.-
FIT	Railway Adventure Trail Albula	for free
FIT	Bernina Glaciers - Diavolezza	on request
FIT / Groups	Bernina Kräuter Express	from 113.-
FIT / Groups	Bernina Express Chur - Tirano	on request
FIT / Groups	Landwasser Express tourist train	from 8.-/4.-
FIT / Groups	Railway Museum Albula	15.- / 11.-
Groups (max. 15 pax)	Guided Tour of the Railway Museum Albula	85.-

* Group and special rates for tour operators on request. Prices may be subject to change. Other offers on page 30, 32, 38.



Three Castles, Defensive Wall and Ramparts of the Market-Town of Bellinzona

Journey through the Middle Ages

Once acting as a barrage to the Alps and now a World Heritage property, the three impressive castles of Bellinzona are among the most significant examples of medieval military architecture. They were built by the Dukes of Milan to bar the route southwards to the Swiss. Bellinzona occupied a strategic position between north and south back then too. Over the course of the centuries, the three castles of Castelgrande, Montebello and Sasso Corbaro have been reconstructed and restored many times. With its walls, towers, battlements and gates, this impressive defensive complex remains a source of wonder to those who view it today.

Did you know?

- The castle of Sasso Corbaro was built in just six months.
- The castles were built by the Dukes of Milan and have only belonged to Swiss Confederation since the start of the 16th century.
- During the Swiss period of occupation, the castles were renamed Castello di Uri, Castello di Svitto and Castello di Unterwaldo.

A proposal of World Heritage experiences

Target	Activity	Price in CHF*
FIT / Groups	Bellinzona Pass (entrance to the three castles and their museums)	28.-/18.-
FIT / Groups	Tourist train „Trenino Artú“	13.-/11.-
FIT / Groups	Guided tour of the old town and the fortress	on request

* Group and special rates for tour operators on request. Prices may be subject to change. Other offers on page 30, 38.



Monte San Giorgio

A sea of memories

Monte San Giorgio rises up between the southern arms of Lake Lugano. Besides the magnificent view of the lake landscape, the 1,097-metre high mountain provides a window to prehistoric times. 240-million-year-old fossils can be found within it. Where there was once a sea basin with different reptiles, fish and plants, Monte San Giorgio formed along with the development of the Alps. Perfectly maintained fossils have been found and investigated here for 150 years. The region is one of the best testimonials to sea life from the Triassic period. The Museum of fossils in Meride, which has been renovated by the architect Mario Botta, ensures insights into this long extinct world.

Did you know?

- Thanks to virtual and augmented reality experiences, it is possible to dive in the Triassic sea, walk along the former beach and admire the animals from that period.
- 240 million years ago, the region around Lake Lugano was a sub-tropical sea.

A proposal of World Heritage experiences

Target	Activity	Price in CHF* Adult/Child
FIT / Groups	Entrance Museum of fossils in Meride	12.-/6.-
FIT / Groups	Audio-Guide in the Museum of fossils (DE, FR, IT, EN)	3.-
FIT/ Groups	Guided tours in the Museum of fossils or excursion (1.5 hours)	120.-
FIT/ Groups	Excursion in Monte San Giorgio area	on request

* Group and special rates for tour operators on request. Prices may be subject to change. Other offers on page 30-32, 38.



Swiss Alps Jungfrau-Aletsch

A glorious world of glaciers

Impressive mountain chains, quaint valleys and the largest connected glaciated area in the Alps. The World Heritage site is one of the most spectacular high-mountain landscapes in the world. It represents the heart of the Alps with the Eiger, Mönch and Jungfrau as well as the huge 824 km² Aletsch glacier. The region brings together the most diverse habitats from glacier to steppe, and gives a clear view of the effects of climate change. The countryside has played just as important a role in European literature, art, mountain climbing and alpine tourism. Few other places on this planet could offer a comparable variety of contrasts and treasures.

Did you know?

- If the Great Aletsch Glacier melted it could give a litre of water to each person living on the planet every day for the next 3,5 years.
- The Jungfrauoch railway station is the highest in Europe at 3,454 metres above sea level and is located in the middle of the World Heritage property.
- Currently, around 280 km² of the World Heritage site is covered in glacial ice. If we assume a rise in temperature of 3-5° C, about 20% of it will remain by the year 2100.

A proposal of World Heritage experiences

Target	Activity	Price in CHF*
FIT /Groups	Entrance World Nature Forum in Naters	18.-
FIT /Groups	Guided tour of the World Nature Forum (in English, German, French, Italian)	150.- + entrance
FIT /Groups	Landscape conservation in the World Heritage area, organised on request	free
Groups (min. 10 pax)	Entrance World Nature Forum in Naters	15.-
Groups	World Nature Forum and excursion in the World Heritage area	on request

* Group and special rates for tour operators on request. Prices may be subject to change. Other offers on page 31, 32, 38.



Prehistoric Pile Dwellings around the Alps

140 years of cultural history

The “pile dwellings” are remains of prehistoric settlements in lakes and marshes around the Alps. The serial property includes 111 sites in six countries (CH, D, F, I, SLO, A) and 56 of them are located in Switzerland. The artefacts – organic materials such as wood, textiles, plant remains and bones provide fascinating insights into life around 5,000 to 500 B.C. Many finds are difficult or impossible to access as they are underwater, on the shores of lakes or in marsh areas. This makes their exhibition in museums even more important, such as at the Laténium near Neuchâtel, where you can gain a detailed impression of the lives our ancestors led.

Did you know?

- Along our lakeshores, Neolithic people contributed to the extraordinary global expansion of cultivated wheat, which now covers more than 2.25 million km².
- The first environmental damage occurred in the time of the pile dwellings over 5,000 years ago with the mass deforestation of woodland areas for farming.

A proposal of World Heritage experiences

Target	Activity	Price in CHF*
FIT	Entrance Museum Laténium in Hauterive	12.-
FIT	Audioguide Museum Laténium in Hauterive	5.-
Groups (max. 25 pax)	Guided tour “Discovering the sunken villages” The tour of the archaeological park and museum enables visitors to access the invisible treasures of the pile-dwellings. The tour explains why and how archaeologists have to protect these sites that are listed as UNESCO World Heritage sites and provides a narrative about the everyday life of early farmers in the Three Lakes region. During the visit participants are given the chance to hold original objects. Duration: 1h	100.- plus entrance
Groups	Guided tour of the Museum Laténium	100.- plus entrance

* Group and special rates for tour operators on request. Prices may be subject to change. Other offers on page 31, 32, 38.



La Chaux-de-Fonds / Le Locle, Watchmaking Town Planning

Two towns that tick alike

The towns of La Chaux-de-Fonds and Le Locle, situated in the Jura mountains of the Canton of Neuchâtel, bear witness to the successful symbiosis between their urban setting and their watchmaking industry. After suffering devastating fires, their reconstruction in the early 19th century was carefully planned. The chequerboard design of the roads and constructions was specifically adapted to the requirements of the thriving industry. Many of the buildings displayed a well-thought-out combination of living quarters, production areas and offices. Today, they are a testimony to the history of local craftsmanship and industry. The fact that the region is still an important international watchmaking centre is proven by the many well-known watch brands which have their headquarters here.

Did you know?

- In 1900, more than half of the world's watches were made in La Chaux-de-Fonds and Le Locle.
- In less than ten years, (1878–1887), three world-renowned figures were born here: Louis-Joseph Chevrolet, Charles-Edouard Jeanneret (Le Corbusier) and Blaise Cendrars.

A proposal of World Heritage experiences

Target	Activity	Price in CHF*
FIT /Groups	Visitor centre - Espace de l'urbanisme horloger (Watchmaking town planning), La Chaux-de-Fonds	free
FIT /Groups	Town Hall and „Time and Urbanism“ space, Le Locle	free
FIT /Groups	Tourist train in both cities (June - September)	9.- /8.-
FIT /Groups	Different guided tours in both cities (Watchmaking town planning, Art Nouveau, Le Corbusier)	from 13.- / from 165.-
FIT /Groups	Visit to the Spillmann apartment (Art Nouveau)	from 110.-
FIT /Groups (max. 8 pax)	Visit to the Zenith Manufacture in Le Locle (Fri. mornings at 9 am or private visits Mon. to Thu.)	50.- private 500.-
FIT /Groups	International Watchmaking museum, La Chaux-de-Fonds	15.-/12,50 free under 12 y.o
FIT /Groups	Watch museum of Le Locle	10.-/9.-
FIT /Groups* (max 20 pax)	Workshop “Functioning of a mechanical movement”	from 225 .- p.p. *from 450.- p.p.
FIT /Groups	Workshop “Assemble your own watch”	from 915.- per person

* Group and special rates for tour operators on request. Prices may be subject to change. Other offers on page 31, 32, 33, 38.

Families

Activity ideas to do together

The World Heritage welcomes everyone and it is a place of discovery for all age groups. Our visitor centres, museums and guided tours are suitable for everyone, but we created tailor-made experiences for children and families alike. Discover, learn and play in a fun way.

A proposal of **family** experiences

Target	Activity	Price in CHF*
Family (max. 2 adults and 5 children)	Abbey of St. Gall: The missing parchment.	12.-/ + plus entrance fees
Children	Rhaetian Railway - Railway Museum Albula: Clà Ferrovia trail game "The lost whistle!" Children under 6 enter for free.	the game is included in the entrance fee
Family	Fortress of Bellinzona - Treasure hunt A multi-level treasure hunt that will lead families on a discovery of Bellinzona and its magnificent fortress.	5.-



Target	Activity	Price in CHF*
Children	Monte San Giorgio - Museum of fossils: Audio-Guide of the Museum for children.	3.-
Children Family	Monte San Giorgio - Museum of fossils: Didactic workshops / excursions for children and adults.	on request
Children Family	Monte San Giorgio - Museum of fossils: Immersive augmented reality (AR) and virtual reality (VR) experiences for children and adults.	included in the entrance ticket
Children	Swiss Alps Jungfrau-Aletsch - World Nature Forum: Children's afternoons and themed entertainment (see World Nature Forum events programme).	5.-
Family	La Chaux-de-Fonds / Le Locle: Les Barons trail game to discover the watchmaking metropolis in a fun way (in French and German).	from 10.-

* Group and special rates for tour operators on request. Prices may be subject to change.

Barrier free travel

Everybody is welcome!

Some of our historic and natural treasures offer barrier free experiences for our visitors. On the following table you will find details of barrier free offers from World Heritage Sites in Switzerland.

A proposal of **accessible** experiences

Accessible	Activity	Price in CHF* Adult/child
Wheelchair	Abbey of St. Gall: Exhibition venues are wheelchair accessible (a lift available). There are some thresholds. If these cannot be overcome easily, the staff is happy to help.	see page 13
Wheelchair, Simplified language	Rhaetian Railway - Railway Museum Albula: The museum is wheelchair accessible (incl. wheelchair accessible WC). Guided tours in simple language are offered.	15.-/11.-
Wheelchair	Rhaetian Railway - Bernina Express: Special seats available on the Bernina Express (incl. wheelchair accessible WC). Seats must be booked via Railservice (+41 81 288 65 65 or railservice@rhb.ch).	on request
Wheelchair Simplified language (kids)	Monte San Giorgio - Museum of fossils: The museum is wheelchair accessible. All contents are translated in 4 languages (IT, DE, FR, EN) and accessible with audio-guides. Simplified language: audio-guides in simple language for Kids.	12.-/6.-
Wheelchair	Swiss Alps Jungfrau-Aletsch - World Nature Forum: The museum is wheelchair accessible. With the Disabled Passenger's ID Card the travel companion enters for free.	15.-
Wheelchair	Benedictine Convent St. John in Müstair - Museum: Only the ground floor of the museum is wheelchair accessible.	free
Wheelchair Simplified language	Prehistoric Pile Dwellings - Museum Laténium: The museum is wheelchair accessible (incl. wheelchair accessible WC). Guided tours in simple language are offered.	reduced rate 4.-
Wheelchair,	La Chaux-de-Fonds - l'Espace de l'urbanisme horloger (Watchmaking town planning). The visitor centre is wheelchair accessible.	free

Accessible	Activity	Price in CHF* Adult/child
Wheelchair, Simplified language, Tactile	La Chaux-de-Fonds - International watchmaking museum The museum is wheelchair accessible (incl. wheelchair accessible WC). Guided tours in simple language and tactile are available (price on request).	15.- /7.50 / Free under 12 y.o.
Wheelchair (max 20 pax)	Le Locle The workshop "Functioning of a mechanical movement" is wheelchair accessible.	from 225.- p.p. Groups from 450.- p.p.
Wheelchair	Le Locle The workshop "Assemble your own watch" is wheelchair accessible.	from 915.- per person
Wheelchair	Fortress of Bellinzona Exhibitions in Castelgrande are wheelchairs accessible. (a lift available)	15.- / 8.-

* Group and special rates for tour operators on request. Prices may be subject to change.



© Zachary Kyra Derksen

Heritage
without barriers.



Events

Highlights not to be missed



World Heritage Days

A weekend dedicated to the World Heritage

Every year during the second weekend in June, the sites will offers unique insights into various natural and cultural wonders and opens their doors to places normally closed to visitors.

Save the date

- 8h and 9th of June 2024
- Programs available in Spring 2024
- visit www.worldheritagedays.ch

Holy Week Processions in Mendrisio

Intangible cultural Heritage

The Processions are held in Mendrisio on Maundy Thursday and Good Friday every year. An unmissable and unique event, where history becomes a spectacle in the perpetuation of tradition. As they make their way through the streets of the town, a soft light is given off by the “Trasparenti”, translucent paintings on canvas mounted on “boxes” and lit up from within. Crafted using a special technique dating back to the eighteenth century, the “Trasparenti” are a characteristic feature of the Processions and a fundamental element of the candidacy. The Maundy Thursday Procession represents the Passion and the Stations of the Cross, featuring around 270 participants. The Good Friday Procession is more austere and solemn, with over 700 participants.

Save the date

- Maundy Thursday and Good Friday every year
- Programs available in Spring
- visit www.processionimendrisio.ch



Other events

Every season and every site is proposing all kinds of events during the year. Stay up to date by visiting www.ourheritage.ch



Visit a unique **Switzerland**
with our preferred partners

There are many ways to discover the uniqueness our country has to offer. Enjoy added values and insights with our selected partners.

Holiday packages - Eurotrek

Carefree hiking and biking

For almost all tours with Eurotrek, luggage transport from one accommodation to another is included in the package price. With route maps and route descriptions, travellers are perfectly equipped to discover Switzerland treasures on their own. In case of uncertainties, Eurotrek travel experts are always there for you.

A proposal of tours in the World Heritage

Example of itineraries	Highlights	Price in CHF*
Biking holidays Maloja - Scuol	Benedictine Convent St. John in Müstair Entrance - Convent museum	from 859.-
Hiking Via Jacobi: Rorschach - Einsiedeln	Abbey of St. Gall Entrance - Abbey Library	from 759.-
Biking Nord-Süd-Route Gotthard & Tessin	Three Castles of Bellinzona Entrance to the castles	from 939.-
Hiking holidays Ticino Highlights	Monte San Giorgio Entrance to the Museum of fossils	from 839.-
Hiking holiday Aletsch Panoramic trail	Swiss Alps Jungfrau-Aletsch Guided glacier trekking	from 989.-
Sardona World Heritage trail	Swiss Tectonic Arena Sardona Cable car Elm – Tschinglen-Alp	from 895.-
Via Albula Bernina	Rhaetian Railway Entrance - Albula Railway Museum	from 639.-
Jura-Route The Swiss wild West	La Chaux-de-Fonds / Le Locle Entrance - International Watch museum	from 979.-
Trans Swiss Trail Porrentruy to Neuchâtel	Prehistoric Pile Dwellings around the Alps Entrance - Laténium park and archaeology museum	from 969.-

* Activities and prices may be subject to change.

Included services

- Luggage transfer (1 piece p.p, 20 kg)
- Carefully elaborated route and instructions
- GPS data
- Service Hotline

Contact

Eurotrek
Günther Lämmerer
Lerzenstrasse 21
CH-8953 Dietikon
www.eurotrek.ch
eurotrek@eurotrek.ch





How to get around Swiss Travel System AG

A ticket to everywhere

Discover the UNESCO World Heritage by train, bus and boat.

Welcome to the country with the world's densest public transport network. Wherever you wish to go – there's a connection. One country – one ticket: with the Swiss Travel Pass, you can enjoy practically unlimited travel by train, bus and boat throughout Switzerland.

Prices 2024 in CHF

Swiss Travel Pass	2nd class	1st class
3 days	CHF 244	CHF 389
4 days	CHF 295	CHF 469
6 days	CHF 379	CHF 602
8 days	CHF 419	CHF 665
15 days	CHF 459	CHF 723

Swiss Travel System tickets are available to persons permanently resident outside Switzerland and the Principality of Liechtenstein.

Included services

- Unlimited travel by train, bus and boat, including premium panoramic trains, e.g. a ride on the Albula/Bernina Line
- Public transportation in more than 90 towns and cities
- Free admission to more than 500 museums, e.g. Abbey of St. Gall
- Up to 50% discount on most mountain railways
- Young travellers up to their 25th birthday receive a 30% discount off the standard price of a Swiss Travel Pass

Information about further tickets and offers for families: mystsnet.com/tickets

Did you know?

The Swiss Travel Pass grants free admission to many visitor centres and museums of the World Heritage properties.

Contact

Please contact your corresponding market manager: mystsnet.com/about

How to get around Schweizerische Südostbahn AG

Smoothly at your holiday destination

Discover the UNESCO World Heritage through Schweizerische Südostbahn.

With its “Treno Gottardo”, “Voralpen-Express” and “Aare Linth” trains, Schweizerische Südostbahn AG (SOB) connects the most beautiful cities with Switzerland’s diverse regions. The modern copper-colored trains invite you on a journey of discovery and adventure.

Treno Gottardo	Voralpen-Express	Aare Linth
The Treno Gottardo runs along the Gotthard panoramic route towards the most sunny part of Switzerland. The panoramic journey to Ticino promises impressive views of rugged mountain faces, deep blue lakes and a wonderful Mediterranean atmosphere with palm trees and stately mansions.	The Voralpen-Express between Central and Eastern Switzerland is the most beautiful connection of nature and culture. The train passes the impressive upland moor in Rothenthurm, continues through Toggenburg, and finally crosses the Sitter Viaduct – regarded as Switzerland’s highest railway viaduct.	Travel between Bern, Zurich and Chur and experience historic old towns, modern shopping streets and historic sites. Along the route the Aare Linth passes through beautiful Swiss scenery, countless rivers and the beautiful Lake Walen.
Route & travel duration <ul style="list-style-type: none"> • Zurich–Locarno: 3 h 22 min • Basel–Locarno: 4 h 24 min • Luzern–Locarno: 3 h 9 min 	Route & travel duration <ul style="list-style-type: none"> • Luzern–Arth-Goldau–Rapperswil–Wattwil–St. Gallen: 2 h 16 min 	Route & travel duration <ul style="list-style-type: none"> • Bern–Zurich: 1 h 30 min • Zurich–Chur: 1 h 31 min
Operation <ul style="list-style-type: none"> • Year-round operation • Operates in both directions at hourly intervals 	Operation <ul style="list-style-type: none"> • Year-round operation • Operates in both directions at hourly intervals 	Operation <ul style="list-style-type: none"> • Year-round operation • Operates in both directions at hourly intervals

Facilities on the train

- 359 seats, 68 of which in 1st class
- All seats with power outlets
- Panoramic windows
- 12 bicycle stands (self-loading, subject to charge)
- Space for baby buggies at the entrances
- Two wheelchair spaces
- Family compartment with illustrated hidden object pictures about the four seasons

Catering

The trains offer two modern bistro areas with vending machines as well as a coffee machine. Guests can find regional and typical snacks and drinks in the vending machine.

Reservation and surcharges

- Seat reservation available for individual travellers (subject to charge)
- Seat reservation required for groups of 10 or more persons (no surcharge)
- Groups of 10 or more persons travelling together receive a discount off the standard fare

Timetables and further information

www.trenogottardo.ch
www.voralpen-express.ch
www.aarelinth.ch



A European Network

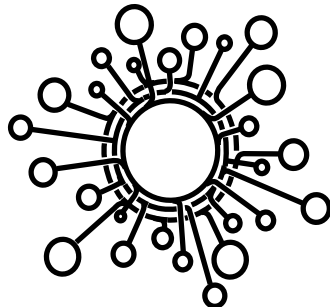
Treasures of the old continent



Over 470 UNESCO World Heritage Sites document the cultural and natural heritage of Europe. Architectural monuments, city ensembles, industrial monuments and natural landscapes bear witness to the history of our continent. Each of these sites is unique, worth protecting and full of exciting stories and personalities. Come with us on a journey of discovery into the past, present and future of Europe.

The members of the European Network of World Heritage Associations exchange information and share experiences. They raise awareness and advocate for the UNESCO World Heritage. More than 13 members active in the field promote the values of UNESCO within Europe and internationally.

www.worldheritageeurope.com



Contacts

Happy to collaborate with you!

The collaboration with B2B-partners is very important for WHES. With each partner we look for a tailor-made solution. Please find below some examples:

- Voucher booklet
- Famtrips
- Joint communication
- Coordinate contacts
- Support product managers with ideas for packages and offers

More information can be found on our website: www.whes.ch (section "trade").

If you are interested in working with the World Heritage properties in Switzerland, please contact us to discuss the details.

Your contact:

Kaspar Schürch
Managing Director WHES
kaspar.schuerch@whes.ch
Tel. +41 (0)31 544 31 17
www.whes.ch

WHES is already cooperating with Tour Operators from all over the world. Some of them offer B2B solutions for resellers.



Heritage is our legacy from the past, what we live with today,
and what we pass on to future generations.

© UNESCO World Heritage Centre

World Heritage Experience Switzerland

Spitalgasse 4, CH-3011 Bern

Tel. +41 (0)31 544 31 15

www.whes.ch, info@whes.ch